

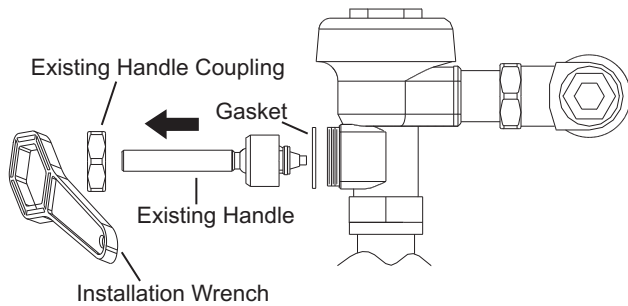
AMTC DUALFLUSH® Handle Instruction Guide

(Refer to illustrations below)

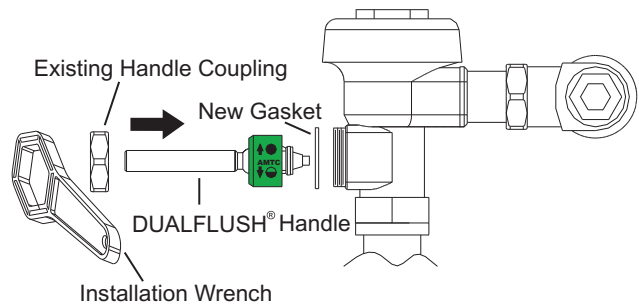
NOTE: Water does not need to be shut off to install DUALFLUSH® Handle, but use caution to NOT ACTIVATE the valve.

IMPORTANT: Make sure that existing diaphragm assembly matches the required flush volume for the existing fixture to assure proper and maximum performance.

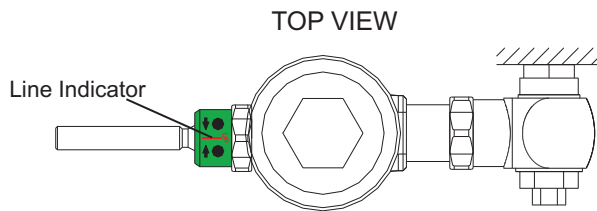
Quick Installation Diagram:



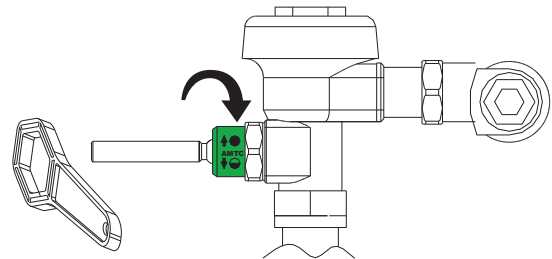
1 Remove Existing Handle Coupling, Existing Handle, and Gasket from Flushometer Valve Body using supplied Installation Wrench.



2 Replace with DUALFLUSH® Handle and New Gasket using Existing Handle Coupling.

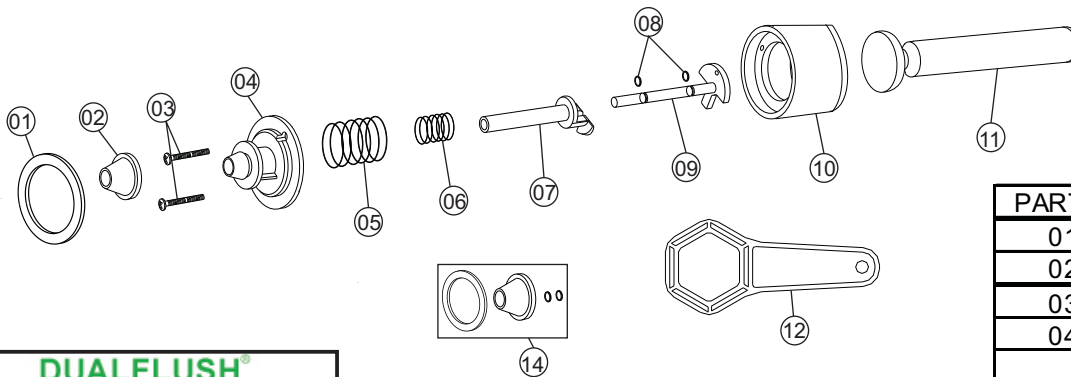


3 Install DUALFLUSH® Handle with "RED LINE" Indicator Facing "UP".



4 Tighten the Handle Coupling Securely using the supplied Installation Wrench.

DUALFLUSH® Handle Parts Diagram:



PART #	PART NAME
01	Washer
02	Seal
03	Screw (2)
04	Bushing 1.6gpf (green) Bushing 3.5gpf (blue)
05	Outer Spring
06	Inner Spring
07	Outer Shaft
08	O-Ring (2)
09	Inner Shaft
10	Socket
11	Handle
12	Wrench
13	Wall Sign (2)
14	Seal Repair Kit



4840 York Blvd
Los Angeles, CA 90042

Toll Free: (800) 458-2377 • Fax: (323) 258-6523

www.CandLSupply.com